



Clothing **NEW!** Wetsuits Windsurfing Sup Kiteboarding Su

Search for pro



Contacts Team Blog Fashion Store

You are in: Home > Products > Windsurfing > Boards > Freestyle Wave X-Tech V2

Freestyle Wave X-Tech V2

All Product Description Photos Videos

PRODUCT



[View hi-res version](#)

Tweet

+1 2

Like 9

“Power, beauty, soul”

Freestyle Wave

The new Freestyle Wave V2 represent the perfect mix of manouverability, going fast, and riding comfort. No other shape in our collection is so difficult yet rewarding in making. You must mix two opposite worlds and still make a board looks sexy and proportionate. The new FSW V2 look more like a wave board than ever before, but have improved in top speed and early planning like no other boards in our range. The freestyle wave V2 perfectly represent the true DNA of the company.

- Volume** 116Lts
- Size (cms)** 237x70
- Fin** MFC FREEWAVE
33 CNC G-10 (PB)
- Fin Box** POWER
- R•S•S** 5.8-8.0



Weight 7.85

Volume:



78Lts



84Lts



90Lts



96Lts



102Lts



108Lts



116Lts

DESCRIPTION

> DE

FREESTYLE WAVE

*“The ultimate
all-rounder
but in a
tougher
construction.
Comfort and
style!”*







Jem Hall

Features

All the boards are much wider than the previous versions averagely between 2-3 cms more. The outlines are all much shorter, between 4 and 10 cms shorted than previous versions. These radical outline changes have created more compact, feet responsive yet easier to plane and fast shapes then ever before. The simple slight double concave/V rail to rail configuration of the hull allows a perfect flow and balance over the roughest waters in any conditions. The straighter rockerlines with an improved nose kick make the miracle of easy planing, control and great top end speed. All the new V2 shapes come with a powerbox in all sizes. The X-tech version comes with a full EVA pad on the stepping area, allowing the use with no straps and also a greater comfort for freestyle manouvers.

Technology

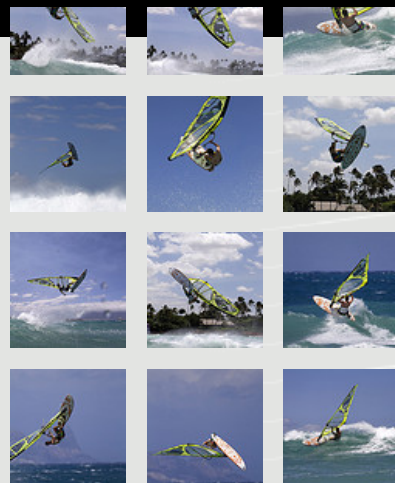
EPS / Full wood sandwich top and bottom/Biaxial Glass 190 grams on deck/160 grams glass with SLX 48 double sandwich bottom.

Tags:  2011,  boards,  freestyle,  wave,  windsurf,  X-tech

> PHOTOS



◀ Studio photos |



PRODUCT ARCHIVE

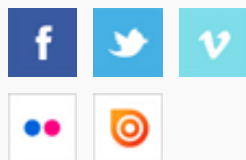
Year 16

PREVIOUS SITES

InsideRRD - archive
Year 15

RRD SOCIALS

Follow us on:



RRD NEWSLETTER

Sign up to get the latest news, videos, offers and more:

CLOTHING

RRD-ROBERTORICCIDESIGN

is a registered trademark licensed to:

EQUIPMENT

- Year 14
- Year 13
- Year 12
- Year 11
- Year 10

- WINDSURFING
- SUP
- KITEBOARDING
- SURFING

Name

Email address

Signup >

Headquarters:
RICCI
INTERNATIONAL
SRL:
Via Rubino 15/17
58100 Grosseto
Toscana, Italy
PIVA/VATcode/Isocode
01239530536

CLOTHING
Headquarters:
MONTECRISTO SRL
Via Topazio 7/C
58100 Grosseto
Toscana, Italy
PIVA/VATcode/Isocode
01178780530

Powered by

