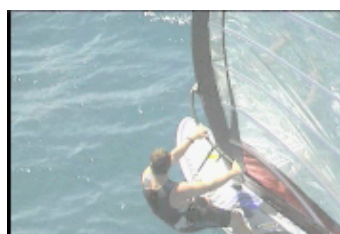


NEWS PRODUCTS PERSONALITY ACTION CONTACTS



FREE RACE

Full Wood Sandwich



CLICK TO PLAY

TEST REPORTS

TECHNOLOGY

FIN

BOTTOM DESIGN

Free Race 127

Length:	260 cm /8'6"
Width:	71 cm /28"
Volume:	127 liters
Weight (+/-6%)	6.9 kg/15.2 lbs
Fin (PowerBox)	FR 44
Shaper:	W. Gnigler
Sails:	ideal: 6.0-8.5 rec.: 5.5-9.0

FREE RACE

TIME TO GET SERIOUS

Blistering speed, a direct dynamic feel and early planing, combined with easy jibing - that's how the international magazines described the 2004 JP Freeride boards.

WERNER GNIGLER'S JOB DESCRIPTION

- maximize top speed and further improve early planing
- keep the lively feel which sets them apart from most competitors
- give them a lively feel
- maintain the carving jibe sensation

WERNER'S SOLUTION

Bottom Curve & Channel Bottom

The flat section became slightly shorter to give the boards a looser ride and reduces the wetted surface even when not fully powered. The channel placed exactly under your feet creates extra lift for better planing and control at top speed.

The New Tail Cut-Out

The re-designed tail cut-out gives the board a much better water release. It does not create any turbulences and reduces the wetted surface and the volume. The boards become very stable and comfortable to sail on all courses and allow you to go faster. Carving jibes are no problem because of thinned out rails and reduced area and volume at the rail.



Free Race 142

Length:	260 cm /8'6"
Width:	75.5 cm /29.7"
Volume:	142 liters
Weight (+/-6%)	7.4 kg/16.3 lbs
Fin (PowerBox)	FR 50
Shaper:	W. Gnigler
Sails:	ideal: 6.4-9.8 rec.: 6.0-10.6



TAIL CUT-OUT

Free Race 157

Length:	260 cm /8'6"
Width:	80.5 cm /31.7"
Volume:	157 liters
Weight (+/-6%)	7.9 kg/17.4 lbs
Fin (PowerBox)	FR 54
Shaper:	W. Gnigler
Sails:	ideal: 6.8-10.6 rec.: 6.2-12.5

Outline

Volume distribution changed slightly. Volume moved from the nose towards the center and tail area. The boards feel very direct and control improved dramatically. Additional width between the straps creates more curve in the outline and a bigger planing area. The boards feel more alive, plane quicker and have better maneuverability.

Rails

Slightly fuller rails and adjusted foot strap position allow a more race oriented sailing stance. The rider can transfer more power onto the board and fin, resulting in better performance. Thin rails at the back of the board created by the re-designed tail cut-out are responsible for the great jibing ability and maximum control. It is amazing how much speed they carry through jibes.

New Fins

The more race oriented concept required a new fin design. Bigger fins with a more parallel and narrow outline come with the new boards. Less drag, more lift combined with better control improves the performance.

WHAT WERNER HAD TO SAY

We decided to pump even more racing potential in these boards. These boards will go as fast as you dare to go. I guess it is time for you to get serious. We achieved a board line which gives you everything a true race board has to deliver but they are still easy to jibe and they are fun to ride as well.